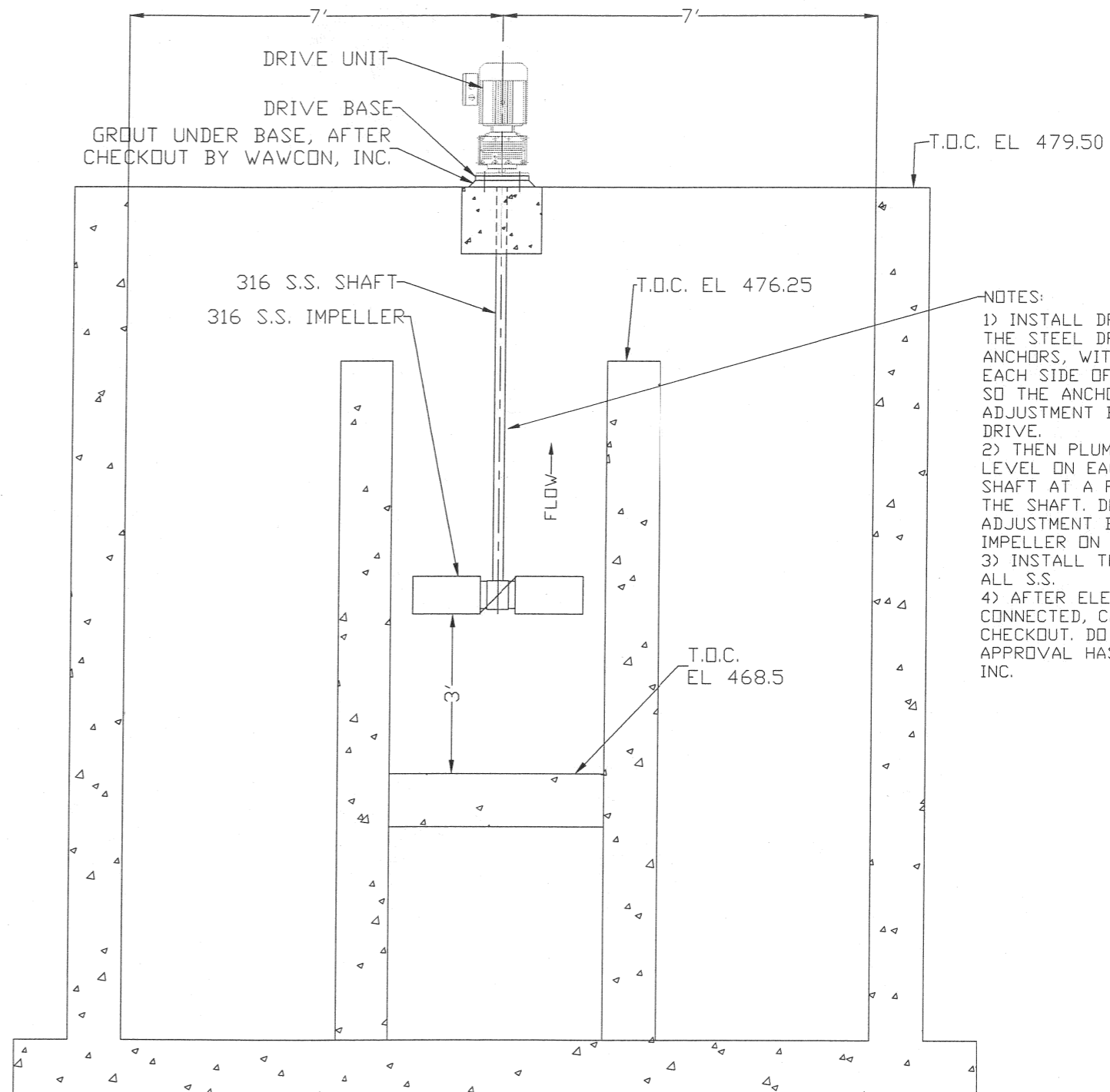


PLAN VIEW OF RAPID MIX BASIN

- NOTES:
 1) GRATING, HANDRAIL, ETC. ARE NOT BY WAWCON, INC.
 2) CONTROLS ARE NOT BY WAWCON, INC.



- NOTES:
 1) INSTALL DRIVE UNIT WITH SHAFT, TO THE STEEL DRIVE BASE AND SET ON ANCHORS, WITH A NUT AND WASHER ON EACH SIDE OF THE DRIVE BASE PLATE, SO THE ANCHORS CAN BE USED AS ADJUSTMENT BOLTS FOR LEVELING THE DRIVE.
 2) THEN PLUMB UP THE DRIVE USING A LEVEL ON EACH SIDE OF THE DRIVE SHAFT AT A POINT ABOUT MIDWAY DOWN THE SHAFT. DO THIS SHAFT PLUMB ADJUSTMENT BEFORE INSTALLING THE IMPELLER ON THE END OF THE SHAFT.
 3) INSTALL THE IMPELLER AS SHOWN, ALL S.S.
 4) AFTER ELECTRICAL HAS BEEN CONNECTED, CALL WAWCON, INC. FOR CHECKOUT. DO NOT OPERATE UNTIL APPROVAL HAS BEEN GIVEN BY WAWCON, INC.

SECTION OF RAPID MIX BASIN

N.B.W. MEANS NOT BY WAWCON, INC.

THIS DRAWING AND ALL DATA ON IT IS PROVIDED ON A RESTRICTED BASIS BY WAWCON, INC. DRIPPING SPRINGS, TX AND SHALL IN NO WAY BE RELEASED OR USED IN ANY WAY THAT MAY BE DETRIMENTAL TO THE INTEREST OF WAWCON, INC., DRIPPING SPRINGS, TX.

tolerances	USER EQUIP. No.		
decimal ±	WAWCON, INC. DRIPPING SPRINGS, TX	scale N/A	drawn by GWH
fractional ±	title CYPRESS SPRINGS W.S.C. RAPID MIXER DETAILS		
angular ±	date 05/30/01	drawing number 2001-05-09E	